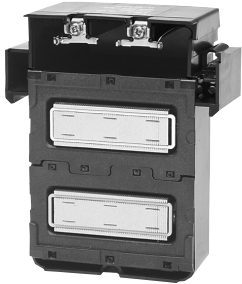
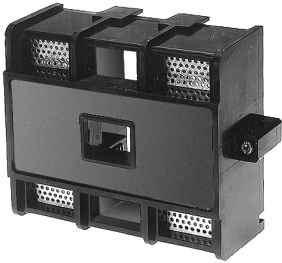


Drive contactors

Replacement parts



EHDRC280-1



EHDBAS280

Coils

Contactor size	Catalog number	AC coils list price	DC coils list price
BHD15	BHDRC15-★	\$ 12	—
BHD30	BHDRC30-★	20	—
BHD60	BHDRC60-★	38	\$ 76
EHDB75, EHDB110	EHDBRC110-★	40	60
EHDB130	EHDBRC130-★	80	100
EHD220, EHD280	EHDRC280-★	100	130
EHD350	EHDRC360-★	120	160
Withdrawable type	EHDBRC280-★	100	130
	EHDBRC360-★	120	160
	EHDB520, EHDB650	240	300
	EHDB800, EHDB960	290	350

EHDB coils can be used as replacement parts in EHD contactors.

Coil voltage selection chart

	Volts														
	24	48	110	120	125	208	220	240	277	380	415	440	480	500	600
60	F	G		1		B	2	2	C			3	4		6
50	N		1			J				3	4			6	
DC	Y	W	P		Q		R								

NOTE: For other voltages, consult factory. • 24VAC coils are not available for sizes EHDB520 – EHDB960. • 48VAC coils are not available for sizes EHDB520 – EHDB960. For these 24V and 48V applications, use an interposing control relay. • 12VDC coils are not available for EHDB520 – EHDB960.

Arc shields

Contactor size	Catalog number	List price	
3 Pole	EHDB75	EHDBAS075	\$ 72
	EHDB110	EHDBAS110	88
	EHDB130	EHDBAS130	115
	EHDB220	EHDBAS220	133
	EHDB280	EHDBAS280	155
	EHDB360	EHDBAS360	169
	EHDB520	EHDBAS520	203
	EHDB650	EHDBAS650	233
	EHDB800	EHDBAS800	247
	EHDB960	EHDBAS960	264
	2 Pole	EHDB75	EHDBAS075-2
EHDB110		EHDBAS110-2	83
EHDB130		EHDBAS130-2	110
EHDB220		EHDBAS220-2	128
EHDB280		EHDBAS280-2	147
EHDB360		EHDBAS360-2	161
EHDB520		EHDBAS520-2	195
EHDB650		EHDBAS650-2	225
EHDB800		EHDBAS800-2	238
EHDB960		EHDBAS960-2	255

Auxiliary contact blocks — EHDB75 to EHDB960

Contactor sizes	Description	Terminal		Catalog number	List price
		N.O.	N.C.		
EHDB75 to EHDB960	Standard 1 N.O. & 1 N.C.	13, 14	21, 22	CAL16-11A	\$ 44
	Standard 1 N.O. & 1 N.C.	43, 44	31, 32	CAL16-11B	44
	Standard 1 N.O. & 1 N.C.	53, 54	61, 62	CAL16-11C	44
	Standard 1 N.O. & 1 N.C.	83, 84	71, 72	CAL16-11D	44
	Late break 1 N.O. & 1 N.C.	47, 48	35, 36	CAL16-11E	50
Type EN81 EHDB130	Standard 1 N.O. & 1 N.C. (left side)	13, 14	21, 22	CAL16-11L	80
	Standard 1 N.O. & 1 N.C. (right side)	43, 44	31, 32	CAL16-11M	
Type EN81 EHDB220 to EHDB280	Standard 1 N.O. & 1 N.C. (left side)	13, 14	21, 22	CAL16-11N	80
	Standard 1 N.O. & 1 N.C. (right side)	43, 44	31, 32	CAL16-11P	

EHDB75 to EHDB960 contactors are provided with a 1 N.O. & 1 N.C. auxiliary contact block mounted on each contactor. One additional 1 N.O. & 1 N.C. auxiliary contact block can be mounted on the left side of the contactor and two additional 1 N.O. & 1 N.C. contact blocks can be mounted on the right side.

Drive contactors

Replacement parts

Contact kits

Contactor size	Catalog number	List price	
2 Pole	BHD60	BHDCK060-2	\$ 95
	EHDB75	EHDBCK075-2	100
	EHDB110	EHDBCK110-2	140
	EHDB130	EHDBCK130-2	155
	EHDB220	EHDBCK220-2	200
	EHDB280	EHDBCK280-2	240
	EHDB360	EHDBCK360-2	465
	EHDB520	EHDBCK520-2	684
	EHDB650	EHDBCK650-2	912
	EHDB800	EHDBCK800-2	1125
	EHDB960	EHDBCK960-2	1410

N.C. DB Kit only

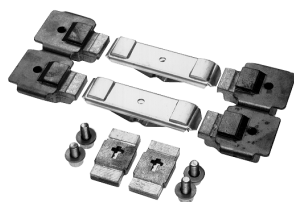
Contactor size	Contact rating	Auxiliary interlocks	Catalog number	List price
BHD15	300V	1 N.O.	CA7D-NC15	\$ 30
BHD30	300V	1 N.O.	CA7D-NC30	40
BHD60	150V	1 N.O.	CA7D-NC60A	50
BHD60	300V	1 N.O.	CA7D-NC60B	50
EHDB75	300V	—	EHDBCK075-NC	75
EHDB110	300V	—	EHDBCK110-NC	75
EHDB130	300V	—	EHDBCK130-NC	95
EHDB220	300V	—	EHDBCK220-NC	110
EHDB280	300V	—	EHDBCK280-NC	110
EHDB360	300V	—	EHDBCK360-NC	210
EHDB520	300V	—	EHDBCK520-NC	342
EHDB650	300V	—	EHDBCK650-NC	342
EHDB800	300V	—	EHDBCK800-NC	460
EHDB960	300V	—	EHDBCK960-NC	460



EHDBCK280-NC

Terminal kits

Contactor size	Wire size	Catalog number	List price	
3 Pole	EHDB75	EHDBTK075	\$ 12	
	EHDB110	EHDBTK110	12	
	EHDB130	EHDBTK130	25	
	EHDB220	EHDBTK220	25	
	EHDB280	EHDBTK280	30	
	EHDB360	EHDBTK360	50	
	EHDB520	EHDBTK520	60	
	EHDB650	EHDBTK650	75	
	EHDB800	EHDBTK800	100	
	EHDB960	EHDBTK960	225	
	2 Pole	EHDB75	EHDBTK075	8
		EHDB110	EHDBTK110	8
EHDB130		EHDBTK130	17	
EHDB220		EHDBTK220	17	
EHDB280		EHDBTK280	20	
EHDB360		EHDBTK360	35	
EHDB520		EHDBTK520	40	
EHDB650		EHDBTK650	50	
EHDB800		EHDBTK800	70	
EHDB960		EHDBTK960	150	



EHDBTK520

Kit includes lugs and mounting hardware